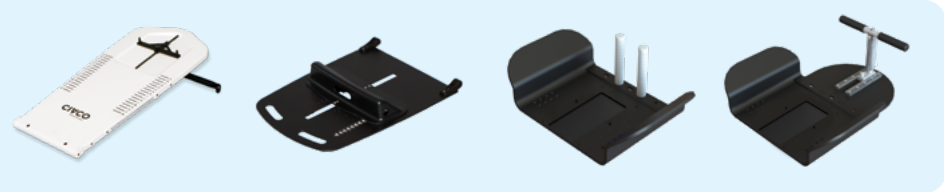


# Evolve Breastboard

**Evolve Breastboard** is a modular and lightweight solution that allows quick and simple indexing of many Wing Boards™ which aids in reproducibility without sacrificing patient comfort. Many hand grips, headrests and thermoplastic options easily integrate to maximize positioning options based on patient or clinical need. The board is indexable to the couchtop with or without the optional folding bottom board and features smooth adjustability between five elevation angles.



**Evolve**  
Breastboard

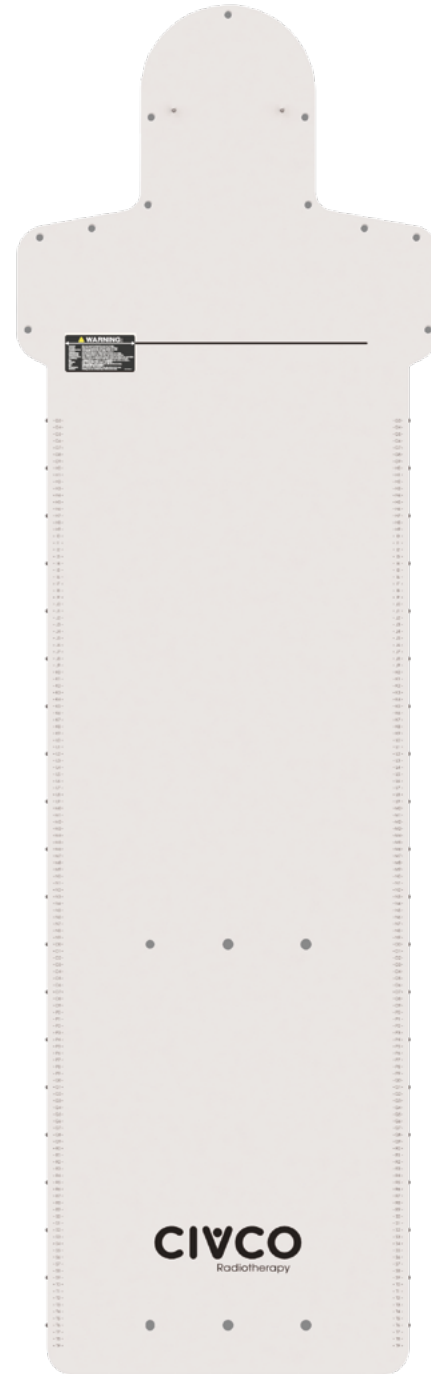


Visit [CivcoRT.com](http://CivcoRT.com) for information on the Chabner XRT™ Radiation Bra



# Breast Solution

**MR** All Breast Solution devices are MR Safe.



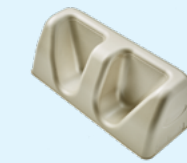
**TotalRT Platform, 201.3 cm, Glass Fiber**  
TRT100  
Qty 1



**Evolve Pro Breastboard**  
Three-Pin compatible. Includes Slant Board, Bottom Board, Bottom Stop, Pro Wing Board, Pro Handles and Gel Head Cup  
MTM500  
Qty 1



**Kneefix™ 3**  
301052  
Qty 1



**Feetfix™ 3**  
301071  
Qty 1



**Prodigy™ 2, MR, Three-Pin Lok-Bar™**  
MTIL6054  
Qty 3



**Type-S™ Lok-Bar**  
MTWBL001  
Qty 1

**Breast Solutions** are sold separately. Suggested quantities are listed. Consult your sales representative for more information.