

Evolve Breastboard

A modular approach to
breast + thorax positioning

 **Evolve**
Breastboard



CIVCO
Radiotherapy™
a better way

A Modular Approach to Breast & Thorax Positioning

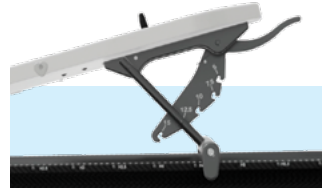
The Evolve Breastboard is a lightweight solution that allows quick and simple indexing of many Wing Boards™ which aids in reproducibility without sacrificing patient comfort. Many hand grips, headrests, Vac-Lok™ and thermoplastic options easily integrate to maximize positioning options based on patient or clinical need.



- CT, MR, photon and SGRT treatment compatible
- Indexing marks allow reproducible setup
- Side scales assist with alignment
- Open slant board base provides easier treatment planning with less material to plan around
- Indexable to TotalRT Platform or other couchtops via two or three-pin Lok-Bar™
- Indexable with or without the optional bottom board

Simple Elevation Adjustment

Support bar secures the board from 5° to 15° with five adjustable elevation angles. Simply lift the superior end of the board and push the handle to adjust the elevation.



Integrated GlideTrack

Allows simple positioning of the Pro, Extended and Standard Wing Boards to accommodate patients of varied torso lengths.



Evolve with Pro Wing Board



Evolve with Extended Wing Board



Evolve with Standard Wing Board and no Bottom Board

Quick and Simple Wing Board™ Indexing

Pro Wing Board

The Pro Wing Board is 23.4" (59 cm) wide and features Individual Hand Grips that are easily adjustable 24 cm on a track in 2.2 cm increments for customized placement of each hand/arm. A gel headrest that is indexable in eight positions is included with the Wing Board. The Wing Board is three-pin indexable and may be used as a stand-alone device.



- Contoured cutouts in shoulder region eliminate attenuation during posterior axillary boosts
- Four handle options can be used (Pro Handles, M Handle, T or U Grip)
- Four headrest options indexable in multiple superior/inferior and lateral positions
- Chin thermoplastic can attach to position patient's chin away from the beam



Pro Wing Board with M Handle

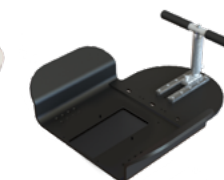


Chin Thermoplastic

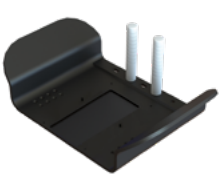
Extended and Standard Wing Boards



Extended Wing Board



Standard Wing Board



Create Your Breastboard Setup



Full Breastboard Package
MTM500 Includes Slant Board, Bottom Board with Bottom Stop, Pro Wing Board, Pro Handles and Gel Head Cup



Evolve Slant Board, Bottom Board with Bottom Stop
OAP240



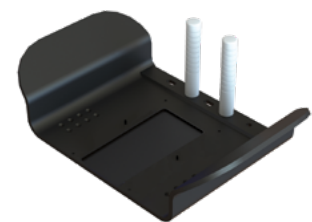
Evolve Slant Board Only
OAP200



Pro Wing Board™
OAP220 Includes Wing Board, Pro Handles and Gel Head Cup



Extended Wing Board
MTWB08T T-Grip (shown)
MTWB08U U-Grip



Standard Wing Board
MTWB09



Vac-Lok™ Cushions
VLWGB04C 108 x 55 cm, 14 L Nylon
VLWGB05C 108 x 55 cm, 14 L Nylon w/ head support cutout



Breast Thermoplastic
MTRFX9182.4 Standard Perforation (2.4 mm)
MTRFX918 Standard Perforation (3.2 mm)
MTRFI9182.4 IMRT Reinforced (2.4 mm)
MTRFI918 IMRT Reinforced (3.2 mm)
MTRFH3 Breast Support Handle System, Qty 2

Wing Board™ Add-ons



Pro Wing Board
OAP140 M Handle



OAP223 T-Grip & Track



OAP224 U-Grip & Track



772021 Chin Thermoplastic, Qty 10



MT250SUB11 Round Head Cup



MTTIMOBBB Timo B Headrest, mounted



MTTIMOFBB Timo F Headrest, mounted

Extended & Standard Wing Board



MTTIMOCL Timo Headrest w/ Lexan Plate



MTSILVER2B Silverman Headrest



CIVCO

Radiotherapy™



Global Sales Office
1401 8th Street SE
Orange City, IA 51041, USA
800.842.8688 | +1 712.737.8688
info@CivcoRT.com | www.CivcoRT.com

COPYRIGHT © 2022. CIVCO IS A REGISTERED TRADEMARK OF CIVCO MEDICAL SOLUTIONS. CIVCO RADIO THERAPY, CIVCO RT, EVOLVE, WING BOARD AND VAC-LOK ARE TRADEMARKS OF MEDTEC LLC. ALL OTHER TRADEMARKS ARE PROPERTY OF THEIR RESPECTIVE OWNERS. ALL PRODUCTS MAY NOT BE LICENSED IN ACCORDANCE WITH CANADIAN LAW.

2022P1620 REV. A