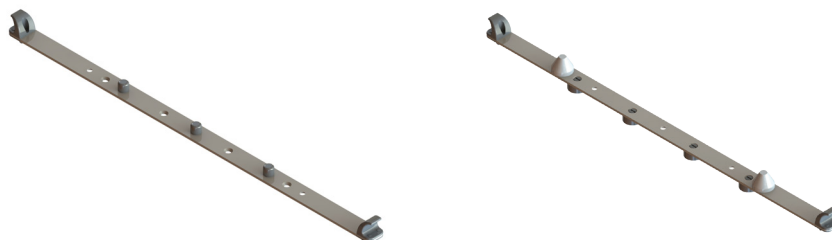


Three-Pin Lok-Bar™ for Elekta Unity MR-Linac

CIVCO Technical Data Sheet



Product Name	Three-Pin Lok-Bar
Product Number	MTULB001 MTULB002 (QA Version)
General Description	The Lok-Bar is a component of an indexing system on the Elekta Unity MRI Linear Accelerator which allows for positioning of accessories.
Indications for Use	The device is intended to support and aid in positioning a patient during radiologic and other medical procedures.
MRI Compatible	MR Safe
Integration	Elekta Unity MRI Linear Accelerators only
FDA Clearance	Yes
CE Marked (EU DOC)	Yes
Other Country Registrations	Available upon request
Country of Manufacture	USA

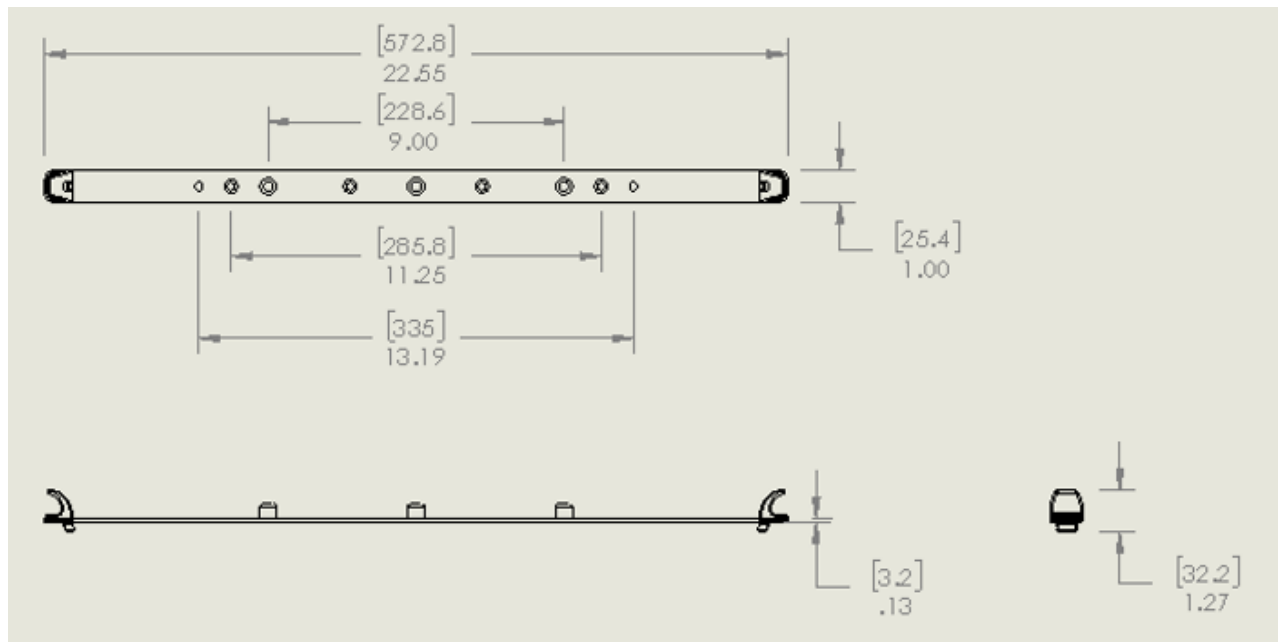
Technical Details

Primary Materials G10 Fiberglass, Black Acetal Copolymer, Black Nylon

Weight (approx) .14 kg / .3 lbs

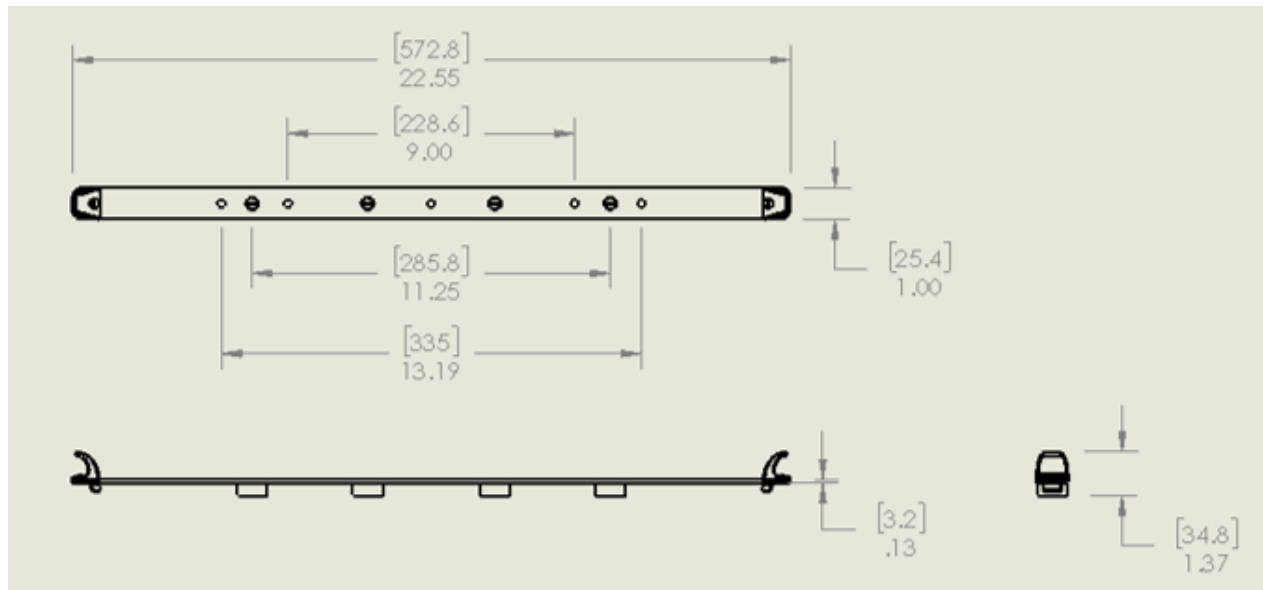
Dimensions (mm) 572.8 L x 25.4 W x 3.2 H (min.)

Technical Drawing - MTULB001



Primary Materials	G10 Fiberglass, Black Nylon
Weight (approx)	.14 kg / .3 lbs
Dimensions (mm)	572.8 L x 25.4 W x 3.2 H

Technical Drawing - MTULB002 (conical locators not included)



Packaging

Unit Pack	Each
Units/Box	One device, may have several component parts in box
Shelf Life	n/a
Warranty	https://civcort.com/ro/About-Us/Product-Warranty-Statement.htm
Sterilization	Non-Sterile
Release Date	May 2020

Global Sales Office

Orange City, Iowa, USA
800.842.8688 | +1 712.737.8688

info@CivcoRT.com
www.CivcoRT.com

COPYRIGHT © 2020. CIVCO IS A REGISTERED TRADEMARKS OF CIVCO MEDICAL SOLUTIONS. LOK-BAR IS A TRADEMARK OF CIVCO. ALL OTHER TRADEMARKS ARE PROPERTY OF THEIR RESPECTIVE OWNERS. ALL PRODUCTS MAY NOT BE LICENSED IN ACCORDANCE WITH CANADIAN LAW.
2020P1511 Rev. A

