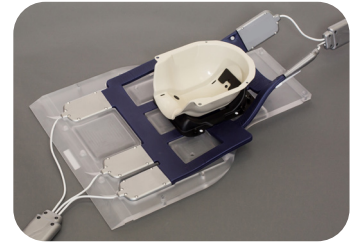
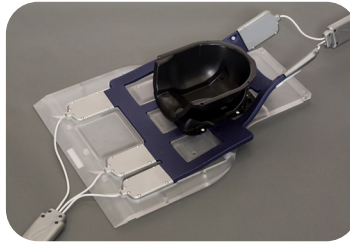


M.C.Inspire Baseplate, Head and Neck Coil Management and Immobilization Systems

CIVCO Technical Data Sheet

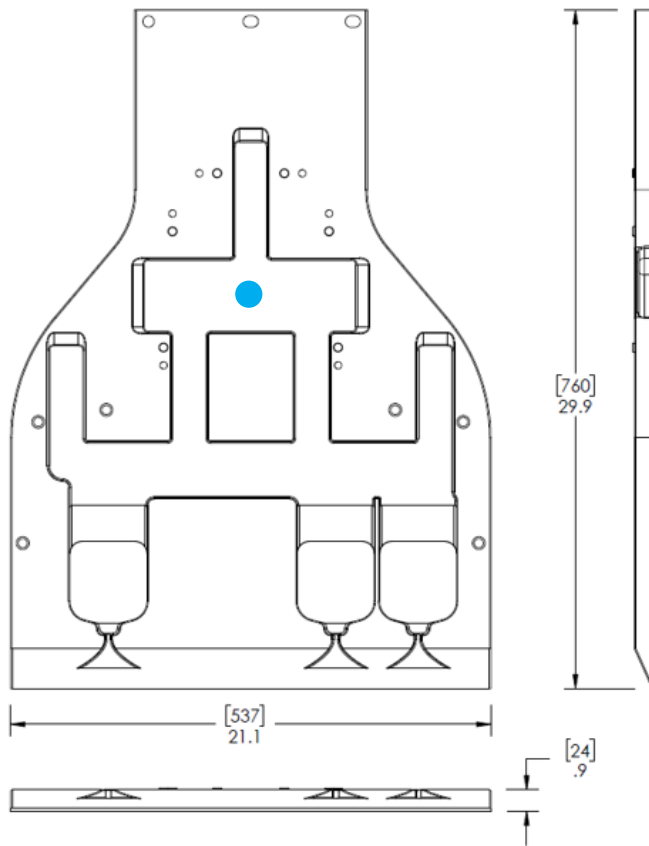


Product Number	MTVRB100	M.C.Inspire Baseplate
	MTVR1000	Lok-Bar™, MR, 50 cm (compatible with M.C.Inspire Baseplate)
	CHS14	Solstat™ Immobilization System (compatible with M.C.Inspire Baseplate)
	CHS18MR	Solstice™ SRS Immobilization System (compatible with M.C.Inspire Baseplate)
Kits that Contain this Product	CHS14SGK	Kit includes: Baseplate, Three-Pin Lok-Bar, Solstat™ Head Support, ClearVision™ open-face thermoplastic masks, Standard size (x10), 20 x 35 cm Chamfered AccuForm™ Cushion (x10)
	CHS18MRSGK	Kit includes: Baseplate, Three-Pin Lok-Bar, Solstice™ Glass Fiber Head Support, ClearVision open-face thermoplastic masks, Standard size (x10), 20 x 35 cm Chamfered AccuForm Cushion (x10)
General Description	The M.C.Inspire Baseplate uniquely integrates and aligns ViewRay's MRIdian® head and neck coils with the high precision positioning provided by CIVCO's Solstat™ and Solstice™ SRS Immobilization Systems. The acrylic baseplate features recessed receptacles that properly position and secure the posterior head and neck coil below the head immobilization system.	
Indications for use	MTVRB100	The device is intended to aid in patient positioning during radiotherapy and diagnostics treatments.
Contraindications	None	
MRI Compatible	Devices are MR Safe	
FDA Clearance	Yes	
CE Marked (EU DOC)	Yes	
Other Country Registrations	Available upon request	
Country of Manufacture	USA	

Technical Details

Primary Materials	Clear Acrylic
Weight (approx)	5 kg (11 lb)
Dimensions (mm)	76 cm x 53.7 cm x 2.4 cm (29.9" x 21.1" x 0.9")
Dosimetric Properties	<ul style="list-style-type: none">● 4.1% attenuation for 6MV The conditions are: <ul style="list-style-type: none">90cm SDD10 x 10cm Field SizeFarmer type ionization chamber Performance Specifications are for reference only, values may vary based on setup and equipment.

Technical Drawing (MTVRB100, M.C.Inspire Baseplate)



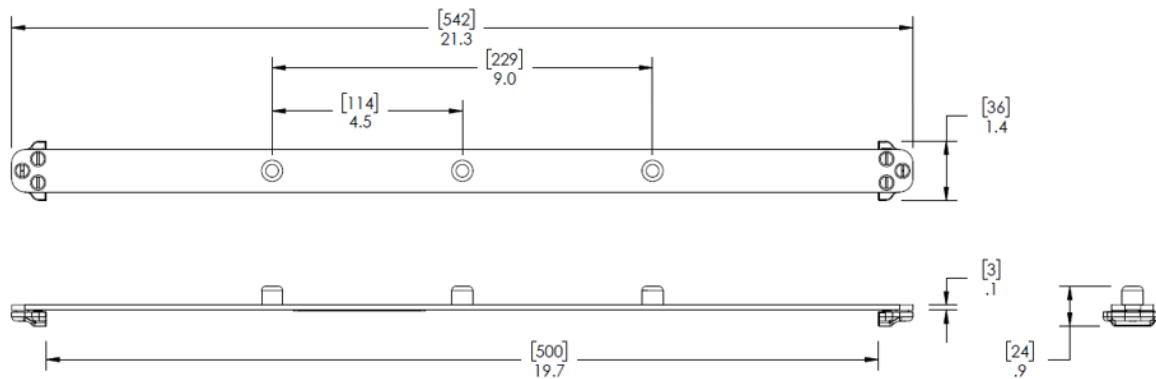
Technical Details

Primary Materials Fiberglass, Black Acetal Copolymer, White Nylon

Weight (approx) 226.8 g (0.5 lb)

Dimensions (mm) 54.2 cm x 3.6 cm x 2.4 cm (21.3" x 1.4" x 0.9")

Technical Drawing
(MTRV1000, Lok-Bar, MR, 50cm)



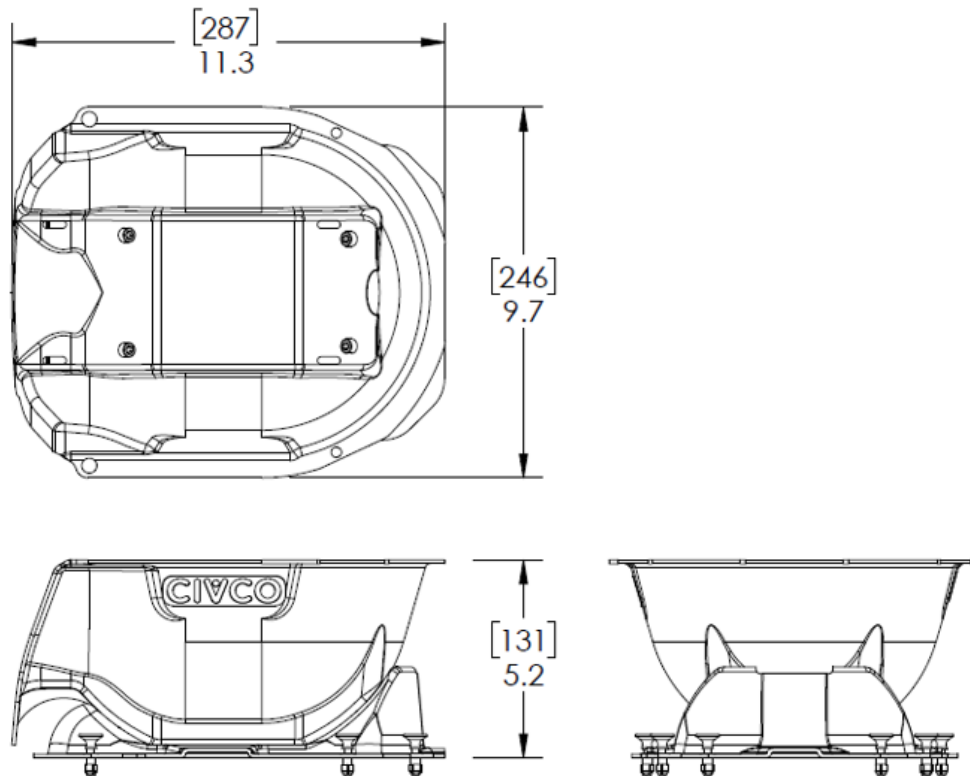
Technical Details

Primary Materials Kydex-T, Nylon, Polycarbonate

Weight (approx) 499 g (1.1 lb)

Dimensions (mm) 28.7 cm x 24.6 cm x 13.1 cm (11.3" x 9.7" x 5.2")

Technical Drawing
(CHS14, Solstat™ Immobilization System, compatible with M.C.Inspire Baseplate)



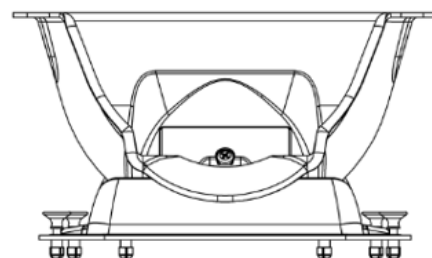
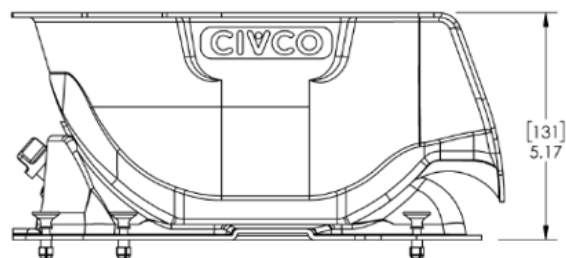
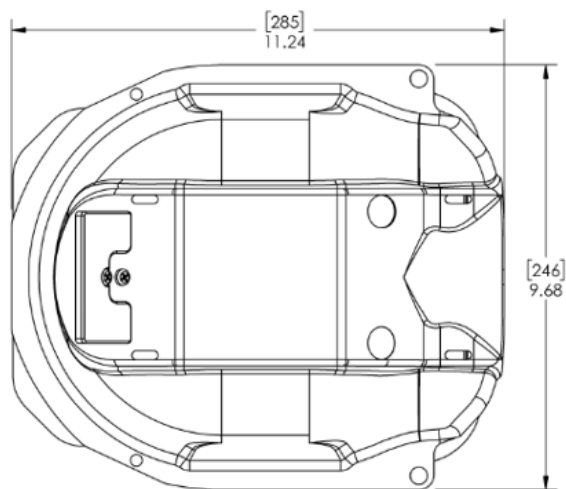
Technical Details

Primary Materials Glass Fiber, Kydex-T, Black Acetal, Nylon, Polycarbonate

Weight (approx) 703 g (1.55 lb)

Dimensions (mm) 28.5 cm x 24.6 cm x 13.1 cm (11.24" x 9.7" x 5.2")

Technical Drawing
(CHS18MR, Solstice™ MR SRS Immobilization System, compatible with M.C.Inspire Baseplate)



Warranty

Warranty [See CIVCO website for Product Warranty Statement](#)

Launch Date April 2021

Accessories

System Customization

Thermoplastic (Head)

MTAPCID1832 Solstice™ Thermoplastic IMRT Reinforced Style 18

MTAPCIN1832 Solstice Thermoplastic IMRT Reinforced Style 18, Narrow

MTAPCID1832SG Solstice Thermoplastic ClearVision™

MTAPCIN1832SG Solstice Thermoplastic ClearVision, Narrow

Thermoplastic (Shoulder)

MTAPSSTS Standard White Solid

AccuForm™ Cushions

MTACL2035 20 x 35 cm Chamfered

MTACL2035HF 20 x 35 cm Chamfered Half Fill

Precise Bite™

MTCBPBITE Standard

MTCBPBITES Small

MTCBPBITETD Standard with Tongue Depressor

MTCBPBITETDS Small with Tongue Depressor

Global Sales Office

Orange City, Iowa, USA
800.842.8688 | +1 712.737.8688

info@CivcoRT.com
www.CivcoRT.com

