

NEW!

FirmFit™ Thermoplastics with SnapFrame™ Type-S™

New segmented thermoplastic frame allows for an improved patient experience with CIVCO's Type-S Patient Positioning System

Drape-style masks offer more rigidity

- Drape style masks require less stretching of the material than continuous frame masks, resulting in a more rigid mask

Higher level of patient care

- Less stretching is required, resulting in minimal shrinkage after cooling keeping patient comfort in mind

Patient specific options

- Available in Head Only and Head, Neck & Shoulders
- Open-face mask allows for region of interest capture for vision/camera systems



Head Only

2.3 mm, Disposable, Box of 5

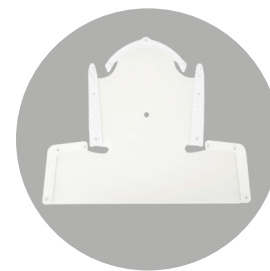
MTAPUDMP



Head Only with Open-face

2.3 mm, Disposable, Box of 5

MTAPUDMPSG



Head, Neck & Shoulders

2.3 mm, Disposable, Box of 5

MTAPSDMP

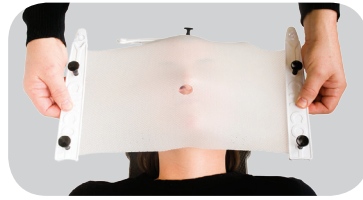
a better way

CIVCO[®]
Radiotherapy

Head Only Workflow



1 After the thermoplastic has been prepared, position the thermoplastic over the patient's head.



2 Gently pull sides of frame outward and down toward base attachment and secure pins to the base.



3 Once frame sides are attached, pull the top section of frame outward and down to base attachment. ***See note for Open Face Mask.**



4 Align frame clips and snap, then secure pin to the base.



5 Secure thermoplastic at chin and gently mold material to the contours of the patient's face.

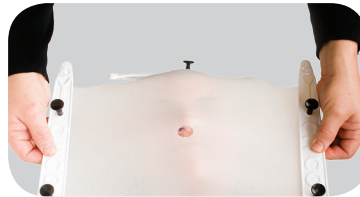


6 Allow thermoplastic to cool completely before releasing from attachment base.

Head, Neck & Shoulders Workflow



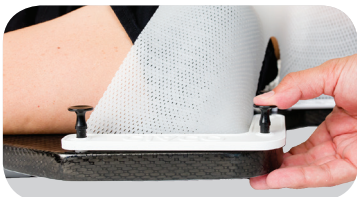
1 After the thermoplastic has been prepared, position the thermoplastic over the patient's head.



2 Gently pull sides of frame outward and down toward base attachment and secure pins to the base.



3 Once frame sides are attached, pull the top section of frame outward and down to base attachment. Align frame clips and snap, then secure pin to the base.



4 Position thermoplastic over shoulders and toward base attachment, then secure pins to the base.



5 Secure thermoplastic at chin and gently mold material to the contours of the face and shoulders.



6 Allow thermoplastic to cool completely before releasing from attachment base.

*Note for Open Face Mask

- Ensure thermoplastic is secure at forehead and chin locations when pulling to attachment base.
- Ensure desired anatomical locations are free of thermoplastic material as required by camera system region of interest.

Global Sales Office

Orange City, Iowa, USA
800.842.8688 | +1 712.737.8688

info@CivcoRT.com
www.CivcoRT.com

CIVCO[®]
Radiotherapy