

**SUPINE
BREASTBOARD
SOLUTIONS**



CHOOSING A SUPINE BREAST & THORAX POSITIONING SYSTEM*



C-Qual M™ C-Qual™

Page 4

Page 6

ARM & HAND SUPPORT OPTIONS	Monarch Overhead Arm Positioner	Arm & Wrist Supports, Monarch Overhead Arm Positioner
HAND GRIP OPTIONS	M Handle, Individual Hand Grips	M Handle, Individual Hand Grips
TREATMENT COMPATIBLE	Photon, Proton	Photon
IMAGING COMPATIBLE	CT, MR	CT
BACK BOARD MATERIAL	Kevlar, Foam Core	Carbon Fiber
ELEVATION SUPPORTS	5°-25° (nine indexable tilt positions)	5°-25° (nine indexable tilt positions)
HEAD SUPPORT OPTIONS	Posifix® Headrests	Posifix Headrests
BREAST THERMOPLASTICS	Yes (one indexing position)	Yes (one indexing position)
HEAD THERMOPLASTICS	Yes (Posicast Head Only and Chin Strap)	Yes (Posicast Head Only and Chin Strap)
VAC-LOK OPTION	Yes	Yes
BACK BOARD ATTENUATION	3.7% @ 6MV (back support & base)	3.11% @ 6MV (back support & base)
CLEAR SUPRACLAV REGION	Yes	Yes
BOTTOM BOARD	Permanent	Permanent

Access™ MR Access™ Evolve®

Pages 7-10

Pages 7-10

Page 11

ARM & HAND SUPPORT OPTIONS	Arm & Wrist Supports, ArmShuttle Elite (interchangeable)	Arm & Wrist Supports, ArmShuttle Elite (interchangeable)	Pro, Extended or Standard Wing Boards, Monarch Overhead Arm Positioner
HAND GRIP OPTIONS	ArmShuttle Posts	ArmShuttle Posts	T-Handle, U-Handle, Pro Handles, M Handle, Delrin Handles
TREATMENT COMPATIBLE	Photon	Photon	Photon
IMAGING COMPATIBLE	CT, MR	CT	CT, MR
BACK BOARD MATERIAL	Foam Core Composite	Carbon Fiber	Glass Fiber, Foam Core
ELEVATION SUPPORTS	0°-25° (eight indexable tilt positions)	0°-25° (eight indexable tilt positions)	5°-15° (five indexable tilt positions)
HEAD SUPPORT OPTIONS	Foam, Gel Cup, TIMO B Headrest, Silverman	Foam, Gel Cup, TIMO B Headrest, Silverman	Round Foam, Gel Cup, Silverman, Timo w/ Lexan plate or adapter
BREAST THERMOPLASTICS	Yes (one indexing position)	Yes (one indexing position)	Yes (two indexing positions)
HEAD THERMOPLASTICS	Yes (Type-S Chin Strap, Head Only and Head, Neck & Shoulders)	Yes (Type-S Chin Strap, Head Only and Head, Neck & Shoulders)	Yes (Chin Strap)
VAC-LOK OPTION	Yes	Yes	Yes
BACK BOARD ATTENUATION	Contact Sales Manager	Contact Sales Manager	2.36% @ 6MV
CLEAR SUPRACLAV REGION	Yes	Yes	Yes
BOTTOM BOARD	Permanent	Permanent	Optional

*These breastboards offer many configurations and compatibilities. Please consult your sales representative for more information.

C-Qual M with Monarch™ Overhead Arm Positioner



C-Qual M™ Breastboard Monarch™ Overhead Arm Positioner

The C-Qual M Breastboard features integration with the Monarch Overhead Arm Positioner, providing an efficient approach for arms-up positioning and allowing proper superior/inferior adjustment of the board to the patient which helps reduce patient slide.

- Matches body contours for optimal arm support and patient comfort
- Contoured cutouts in shoulder region help reduce attenuation during posterior axillary boosts
- Two hand grip designs allow for customized placement of each hand and arm
- Easy on/off latch system of the Monarch Overhead Arm Positioner eliminates need for tools to make adjustments
- Optical Surface Monitoring System (OSMS) compatible
- Elevation Supports secure angles from 5° to 25° with nine different tilt positions
- Compatible with Posicast Head Only and Chin Strap Thermoplastics (with Monarch or board-only), Breast Support Thermoplastics, Posifix Headrests and Vac-Lok Cushions

MTM400	C-Qual M with Monarch
013156	Wall Storage Device

Breast Support Thermoplastic

These thermoplastics for breast positioning require two reusable handles that mount to the C-Qual M, C-Qual, Evolve Breastboards.

	2.4 MM	3.2 MM	
Standard Perforated	MTRFX9182.4	MTRFX918	
IMRT Reinforced	MTRFI9182.4	MTRFI918	
Breast Support Handle System, Qty 2	-	-	MTRFH3



VIEW THE C-QUAL M INSTRUCTIONAL VIDEO



Featuring Individual Hand Grips



Mask can attach directly to incline board



Monarch Overhead Arm Positioner

The Monarch Overhead Arm Positioner is 23.4" (59 cm) wide and features two hand grip designs; a one-piece M Handle or individual hand grips. Each option can be adjusted a total of 24 cm and the individual grips can adjust in 2.2 cm increments for customized placement of each hand/arm.

- Matches body contours for optimal arm support and patient comfort
- Indexable for easy stand-alone use
- Compatible with Posicast Head Only and Chin Strap Thermoplastics with use of Monarch Thermoplastic Frame

OAP110	Monarch (includes M Handle, Tracks and Headrest)
OAP221	Pro Individual Hand Grips, Qty 1
OAP170	M Handle Tracks (2 each) (for Monarchs purchased prior to January 2019)
OAP180	Individual Hand Grips (2 each) and Tracks (set of 2) (for existing Monarch customers prior to January 2019)

Thermoplastic Option

Posicast thermoplastics are drape-style masks that require less stretching, therefore resulting in minimal shrinkage after cooling.

OAP120	Monarch Thermoplastic Frame
970031	Posicast-Lite Head Only (3 pt) with Open-face, 2.3 mm, Qty 10
772021	Chin Strap Thermoplastic, Qty 10

Wing Board Vac-Lok

Wing Board Vac-Lok creates a rigid and secure support around the patient when a vacuum is drawn through a self-sealing quick-release valve.

VLWGB04C	108 x 55 cm, 17 L, Nylon (also compatible with Pro Wing Board)
VLWGB05C	108 x 55 cm, 14 L, Nylon w/ Head Support Cutout



Monarch™ Overhead Arm Positioner



Monarch Thermoplastic Frame allows for attachment of Posicast Head Only or Chin Strap Thermoplastics



Monarch with 108 x 55 cm Wing Board Vac-Lok

C-Qual Breastboard

The carbon fiber C-Qual Breastboard is lightweight, designed for patient comfort and features a low-attenuating IGRT treatment zone. The C-Qual's advanced features bring efficiencies to breast setup and treatment.

- Elevation Supports secure angles from 5° to 25° with nine different tilt positions
- Advanced arm supports, with no interference in the supraclavicular region
- Compatible with the Monarch Overhead Arm Positioner
- Compatible with Posicast Head Only Thermoplastics and Breast Support Thermoplastics (page 4)
- Special wide headrest included

MT401	C-Qual with Monarch. Includes M Handle and Tracks compatible with the Individual Hand Grips (hand grips sold separately).
MT400	C-Qual with Arm & Wrist Supports
OAP100	Monarch (upgrade kit for MT400). Includes M Handle and Tracks compatible with the Individual Hand Grips (hand grips sold separately).
OAP120	Monarch Thermoplastic Frame
013156	Wall Storage Device

Monarch Individual Hand Grip options available, see page 5

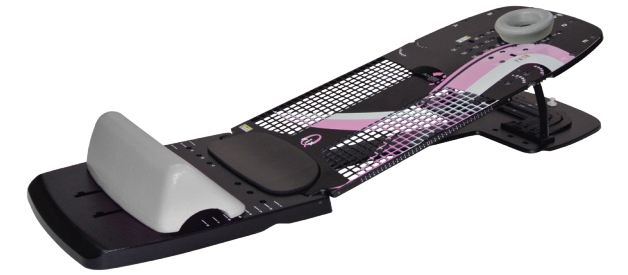


Access Supine & Access Supine MR

The Access Supine positions the patient's chest and thorax for external beam radiotherapy. The ladder system secures the backrest at various angles while the tailbone pad and bottom stopper comfortably support the patient for the duration of imaging and treatment.

- Accessories fix securely to the device so that they remain in place for storage and workflow efficiency
- Ladder system indexes patients at 0°, 5°, 7.5°, 10°, 12.5°, and 15° angles for breast treatments
- Optional 20° and 25° ladder set sold separately

RT-4546MRI	Access Supine MR Breast & Lung
RT-4546	Access Supine Breast & Lung with Carbon Fiber Grid
RT-4546-02	Access Supine Breast & Lung without Carbon Fiber Grid
RT-4546-01	Access Supine Breast Only with X-Trans™ base
RT-4543WALL	Wall Mount



Foam bottom stopper and headrest Included. Arm Support Options sold separately, see page 8.



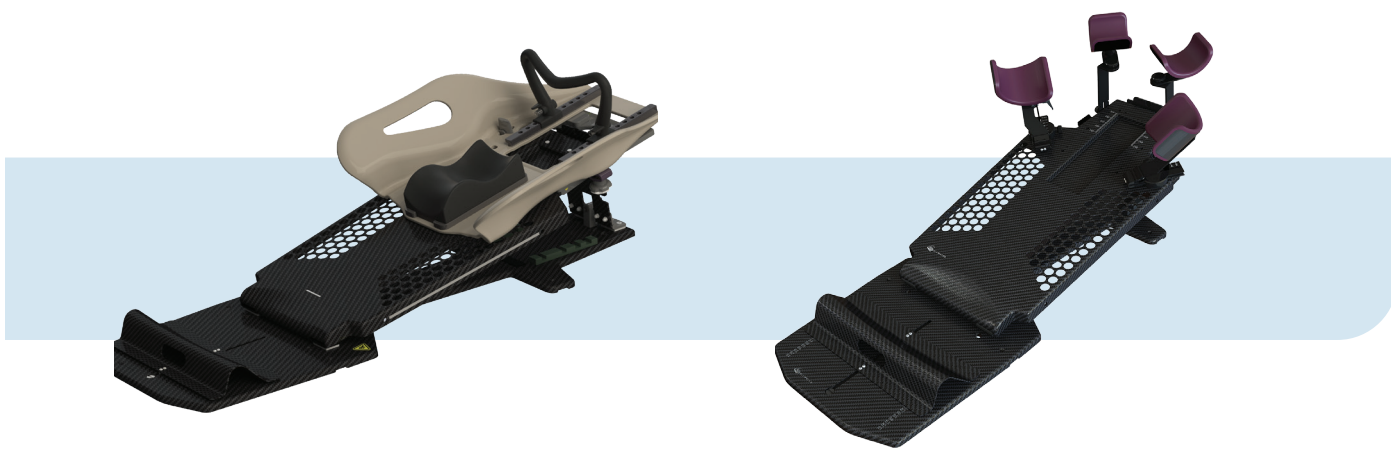
Built-In Ladder System Included. Accessory Ladder Set Sold Separately.



Indexing Scale on device



VIEW THE ACCESS VIDEO



C-Qual with Monarch Overhead Arm Positioner

C-Qual with Arm & Wrist Supports



MR Safe with ArmShuttle Elite

With Carbon Fiber Grid with Arm & Wrist Supports

Without Carbon Fiber Grid with Arm & Wrist Supports

With X-Trans Base with Arm & Wrist Supports

Access Supine Arm Support Options



ArmShuttle™ Elite

The ArmShuttle Elite allows for full arms up positioning technique. The ribs of the shuttle index vacuum cushions and aid in ease of setup for daily treatments. The ArmShuttle Elite can affix to Access MR and Access Supine devices. It is possible to index directly to treatment couch tops for standalone use.

RT-4546C	ArmShuttle Elite with foam headrest and posts (w/ no indexing scales) (bottom-left photo)
RT-8003020	ArmShuttle Post with Indexing Scale, 1 Post (sold separately) (bottom-right photo)



Arm & Wrist Supports

Independently adjustable Arm & Wrist Supports position the patient's arms out of the treatment field while exposing the chest for breast and nodal imaging and treatment. The ability to customize each patient's arm and wrist position also helps to increase comfort for patients with incisions while minimizing skin folds.

- Turn knob allows quick and ridged indexing of the Arm Support
- Wrist Supports rotate and are height adjustable
- Pads are easily removed for cleaning

RT-4546AW-01	Access Wrist Support (left photo)
RT-4546AA-01	Access Arm Support (right photo)



Access Supine Customization



Portrait Head & Shoulder Thermoplastic Adapters

Portrait Head & Shoulder thermoplastic adapters allow head and neck treatment for patients that are unable to lie flat. Portrait Head Only Adapter is supplied with mounting provisions for a chin strap.

RT-4546-03	Portrait Head Only Adapter (left photo)
RT-4546-04	Portrait Head & Shoulder Adapter (right photo)



Thermoplastic Chin Strap

Aquaplast RT Thermoplastic Chin Strap is designed to be used with the Portrait Head Only Adapter for Access Supine Breast Devices to keep the patient's head out of the treatment field.

RT-1778PR2DC	Aquaplast RT Chin Strap
--------------	-------------------------



Thermoplastic Breast Adapter

This device increases functionality by providing the ability to attach thermoplastic sheets to the Access Supine. This increases reproducibility of breast positioning for treatment. The device works in conjunction with 14" Opti-Handles to secure thermoplastics to the Access Supine.

RT-4546-05	Access Supine Thermoplastic Breast Adapter
RT-4454-14	Opti-Handles, 36 cm (14 in.)
RT-1783P3	Aquaplast Standard Perf (30 cm x 45 cm x 2.4 mm)

Access Supine Customization



Accessory Ladder securely attaches to mount on the baseplate

Accessory Ladder Set

Accessory Ladder Set elevates the backrest to 20° & 25° angles for increased imaging and treatment options.

RT-4546L Accessory Ladder Set

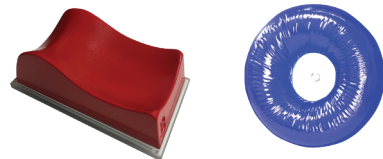


ArmShuttle Elite with Adapter and Silverman headrest

Silverman Adapter for Breast Devices & ArmShuttle

Easily indexes Silverman headrest for enhanced repositioning, accuracy, and patient comfort.

RT-4543S Silverman Adapter for Access Breast Devices & ArmShuttle (Note: Silverman Adapter is transparent)



Headrests

RT-4490-BX TIMO B Headrest with Indexing Tray (left photo)

RT-4494 Gel Donut, 200mm (right photo)

RT4494-P Gel Donut, 150mm

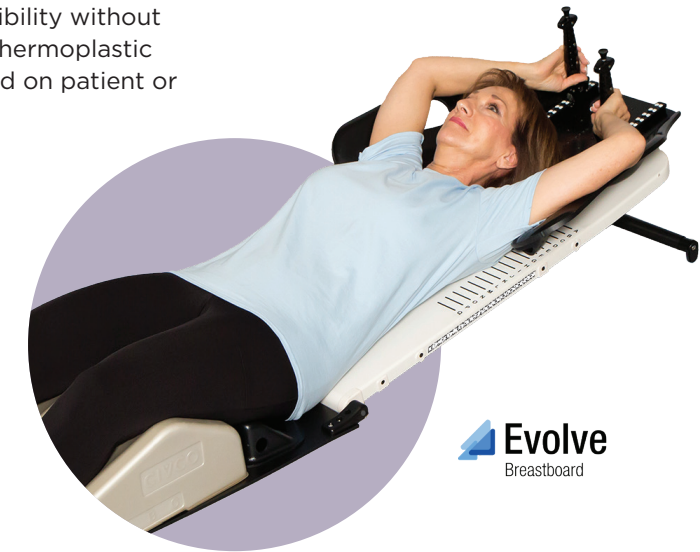
Evolve Breastboard

The Evolve Breastboard is a lightweight solution that allows quick and simple indexing of many Wing Boards which aids in reproducibility without sacrificing patient comfort. Many hand grips, headrests, and thermoplastic options easily integrate to maximize positioning options based on patient or clinical need.

- CT, MR, photon and SGRT treatment compatible
- Indexing marks allow reproducible setup
- Side scales assist with alignment
- Compatible with Breast Support Thermoplastics and Wing Board Vac-Lok Cushions
- Indexable to TotalRT Platform or other couchtops via two- or three-pin Lok-Bar
- Indexable with or without the optional bottom board



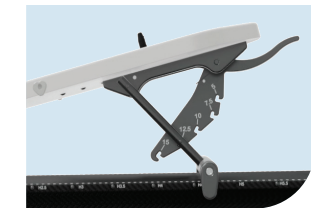
VIEW THE EVOLVE VIDEO



Evolve
Breastboard

SIMPLE ELEVATION ADJUSTMENT

Support bar secures the board from 5° to 15° with five adjustable elevation angles. Simply lift the superior end of the board and push the handle to adjust the elevation.



INTEGRATED GLIDETRACK

Allows simple positioning of the Pro, Extended and Standard Wing Boards to accommodate patients of varied torso lengths.



A MODULAR APPROACH TO BREAST & THORAX POSITIONING



Evolve with Pro Wingboard

Evolve with Extended Wingboard

Evolve with Standard Wing Board and no Bottom Stop

Pro Wing Board

The Pro Wing Board is 23.4" (59 cm) wide and features Individual Hand Grips that are easily adjustable 24 cm on a track in 2.2 cm increments for customized placement of each hand/arm. Two headrest options (Round Foam or Gel Cup) are indexable in eight positions

- Contoured cutouts in shoulder region eliminate attenuation during posterior axillary boosts
- Four handle options can be used (Pro Handles, M Handle, T or U Grip)
- Chin thermoplastic can attach to position patient's chin away from the beam
- Three-pin indexable for stand-alone use



OAP220 Pro Wing Board with Pro Handles and Gel Head Rest

Pro Wing Board Accessories



OAP140 M Handle



OAP223 T-Grip & Track



OAP224 U-Grip & Track



772021 Chin Thermoplastic, Qty 10



MT250SUB11 Round Head Cup

CREATE YOUR BREASTBOARD SETUP

Evolve Breastboard Package

MTM500 Includes Slant Board, Bottom Board, Bottom Stop, Pro Wing Board, Pro Handles and Gel Head Cup

Evolve Slant Board, Bottom Board & Bottom Stop

OAP240

Evolve Slant Board

OAP200

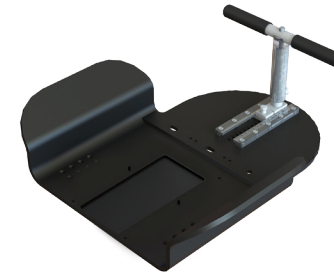
Evolve Type-S Locating Kit

OAP300 Includes Evolve Type-S Locating Bar and Slide Guide Three-Pin Lok-Bar for indexing to Alta or TotalRT All in One

See page 13 for additional Wing Board options.



Wing Boards™

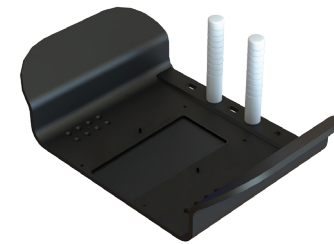


Extended Wing Board

The Extended Wing Board is 22.5" (57 cm) wide, constructed of durable, lightweight ABS and can be used with a T- or U-Grip handle. Its extended length allows for additional arm positioning flexibility. It is CT and MR Safe and indexable for enhanced reproducibility from imaging through treatment. It easily attaches to the Evolve breastboard.

MTWB08T w/ T-Grip (shown)

MTWB08U w/ U-Grip



Standard Wing Board

The Standard Wing Board is 22.5" (57 cm) wide, constructed of durable, lightweight ABS and features Delrin post hand grips. It is CT and MR Safe and indexable for enhanced reproducibility from imaging through treatment. It easily attaches to the Evolve breastboard.

MTWB09



Tapered Wing Board

The Tapered Wing Board is 22" (56 cm) wide and has angled wings, providing patient comfort and support. Its narrow profile is ideal for CT and PET bores. It is MR Safe and available with a T- or U-Grip Handle.

MTWB10T w/ T-Grip

MTWB10U w/ U-Grip (shown)



Grip Options

Both the T-Grip and the U-Grip are available individually. Compatible with the Extended and Tapered Wing Boards.

MTGBSUB1 T-Grip

MTGBSUB3 U-Grip



See page 5 for the Monarch Overhead Arm Positioner

See page 8 for the ArmShuttle Elite

See page 12 for the Pro Wing Board

Additional headrest options are available



COMFORTABLE IMMOBILIZATION IS NOT AN OXYMORON

Not to us, anyway. We believe that comfort and the products that hold a patient in place during radiotherapy must coexist. When a patient is immobilized and comfortable, it puts them in a better position for better possible outcomes.

 **CQ MEDICAL™**
Care Smarter
Formerly CIVCO RT™ and Qfix®



info@CQmedical.com | www.CQmedical.com



CIVCO RT LEGACY PRODUCTS

CIVCO RT legacy part numbers are anything besides “RT-” (for example, anything beginning with MT, BPL, OAP, or a whole number).

CUSTOMER CARE

Toll-free within the U.S. and Canada: **800.842.8688**

Direct Dial: **+1 712.737.8688**

Direct Sales Email: **CRTorder@CQmedical.com**

QFIX LEGACY PRODUCTS

Qfix legacy part numbers begin with “RT-”.

CUSTOMER CARE

Toll-free within the U.S. and Canada: **800.526.5247**

Direct Dial: **+1 610.268.0585**

Direct Sales Email: **Qsales@CQmedical.com**

Copyright ©2023 CQ Medical. All rights reserved. CIVCO Radiotherapy, CIVCO RT, CQ Medical, C-Qual, C-Qual M, Evolve, GlideTrack, Lok-Bar, Monarch, Vac-Lok and Wing Board are trademarks of Medtec LLC. Posicast and Posifix are registered trademarks of Medtec LLC. CIVCO is a registered trademark of CIVCO Medical Solutions. Qfix is a registered trademark of Qfix Systems LLC. Access, ArmShuttle, Aquaplast RT, Portrait and X-Trans are trademarks of Qfix Systems LLC. All other trademarks are property of their respective owners.

This brochure contains information about products which may or may not be available in particular countries. These products may not be licensed in accordance with Canadian law. Each country has specific laws and regulations governing the commercialization of medical devices and the communication of information regarding medical devices in printed and digital media. Products appearing in this brochure or on our website may or may not have received approval, clearance, or marketing authorization by a governmental regulatory body in any particular country, or may have received approval, clearance, or marketing authorization for different indications and restrictions in different countries, or may be for investigational use only. A product's appearance in this brochure should not be construed as a solicitation or promotion for said product, nor any indication which is not authorized by the laws and regulations of the country where the reader resides.